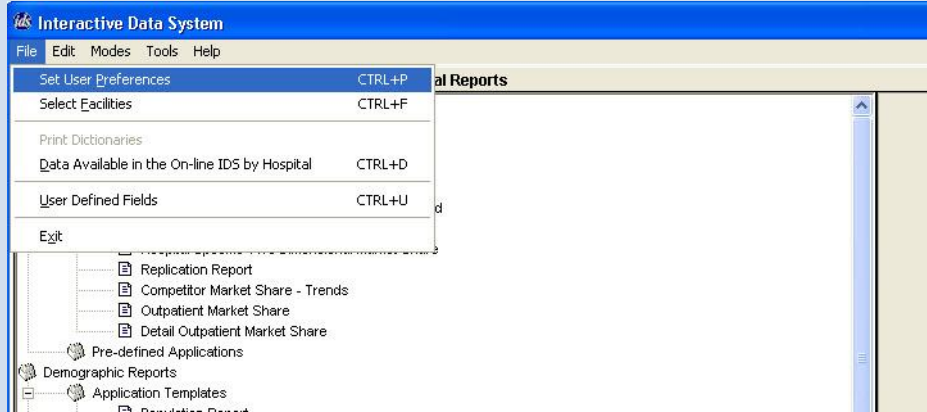


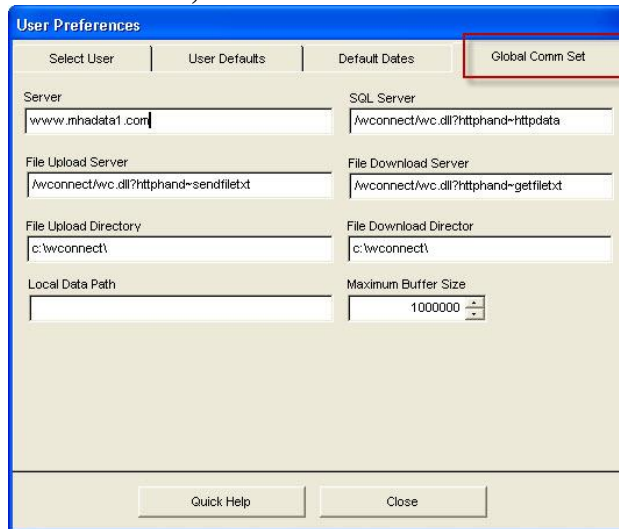
## Guide to Accessing Historic Data

1. Log in to IDS Normally.

2. In the top-left corner of IDS, click on File and then choose “Set User Preferences”.



3. On the User Preferences window, click on the “Global Comm Set” Tab.



4. In the Server field, enter [www.mhadata1.com](http://www.mhadata1.com).

5. Close the User Preferences window.

6. Exit IDS

7. Re-launch IDS, you should have access to historic data. (January 1996 – December 2003)

8. To access current data, repeat the steps above but changing the Server to [www.mhadata2.com](http://www.mhadata2.com)

Questions? Please contact:  
**IDS Client Support Team**  
[Idssupport@mha.org](mailto:Idssupport@mha.org)  
877-999-4653